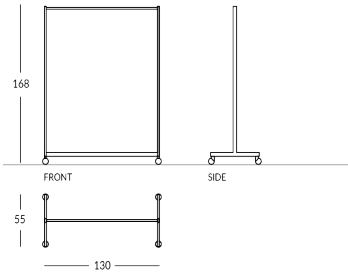


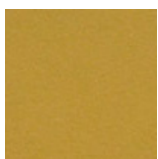
GIULIA-STN

Barra perchero con diseño lineal. Estructura de metal de perfil rectangular, personalizable con pintura en los colores APIR o en cualquier tono de la escala RAL. Cuatro ruedas pivotantes en la base. Altura: 168 cm Ancho: 130 cm Profundidad: 55 cm Peso: 9,4 kg

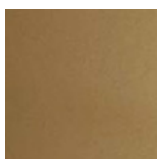
Versione



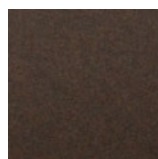
Finiture Verniciate | Painted finishes | Finitions peintes



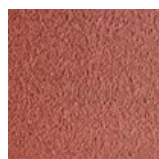
Oro



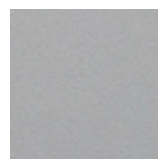
Oro antiguo



Bronze



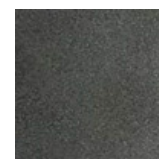
Simil Corten



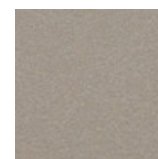
Silver



Tortora (Ral
1019)



Canna di
Fucile



Antigo De
Luz

