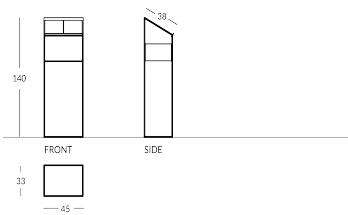


FRIEDA-POD

Atril de metal de la Colección Frieda. Estructura de perímetro rectangular con cuatro barras de metal, estante informativo inclinado y segundo estante intermedio. Acabados disponibles: - metálica: efecto latón, acero o cobre - pintura en los colores Apir o en cualquier color RAL. Altura: 140 cm Base rectangular: 45 x 33 cm Superficie de apoyo: 38 cm. Peso: 9,8 kg



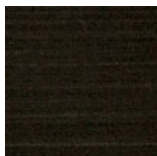
Versione



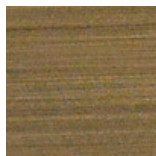
Finiture metalliche | Metal finishes | Finitions métalliques



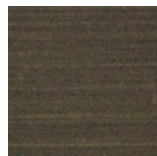
Acero industrial



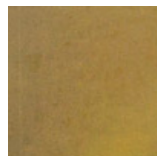
Latón Envejecido Oscuro



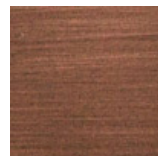
Latón bronce claro



Latón bronce oscuro

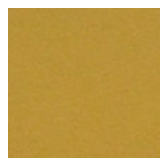


Latón industrial

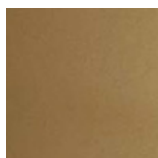


Cobre satinado efecto antiguo opaco

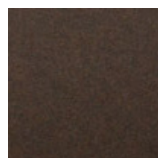
Finiture verniciate | Painted finishes | Finitions peintes



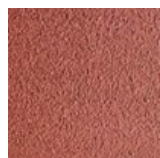
Oro



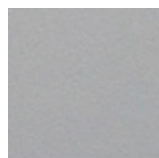
Oro antiguo



Bronze



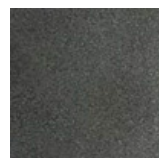
Simil Corten



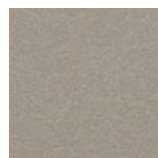
Silver



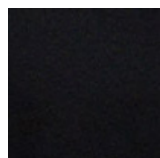
Tortora (Ral
1019)



Canna di
Fucile



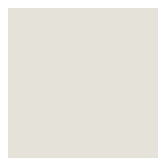
Antigo De
Luz



Matt black
(Ral 9005)



Polished
black (Ral
9005)



Matt white
(Ral 9010)



Gris oscuro
(Ral 7016)



Gris claro
(Ral 7042)



Ral