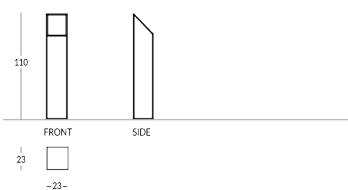


FRIEDA-DIR

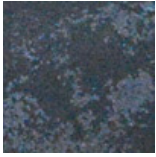
Atril informativo de metal al estilo de la Colección Frieda. Estructura de perímetro cuadrado con cuatro barras de metal y estante informativo inclinado. Acabados disponibles: - metálica: efecto latón, acero o cobre - pintura en los colores Apir o en cualquier color RAL Texto aplicado en la placa de metal que se inserta en el marco del atril. Altura: 110 cm Lado base cuadrada: 23 cm Peso: 12,70 kg



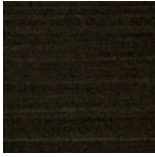
Versione



Finiture metalliche | Metal finishes | Finitions métalliques



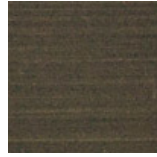
Acero industrial



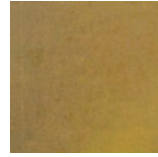
Latón Envejecido Oscuro



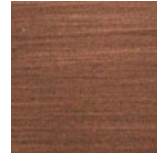
Latón bronce claro



Latón bronce oscuro

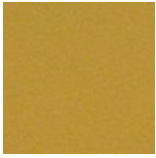


Latón industrial

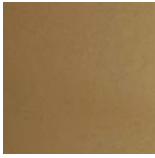


Cobre satinado efecto antiguo opaco

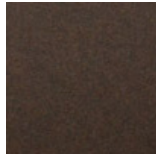
Finiture verniciate | Painted finishes | Finitions peintes



Oro



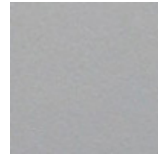
Oro antiguo



Bronze



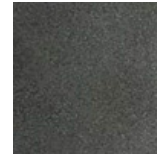
Simil Corten



Silver



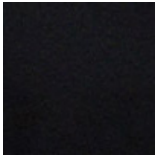
Tortora (Ral 1019)



Canna di Fucile



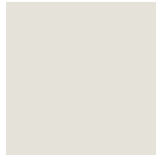
Antiguo De Luz



Matt black (Ral 9005)



Polished black (Ral 9005)



Matt white (Ral 9010)



Gris oscuro (Ral 7016)



Gris claro (Ral 7042)



Ral