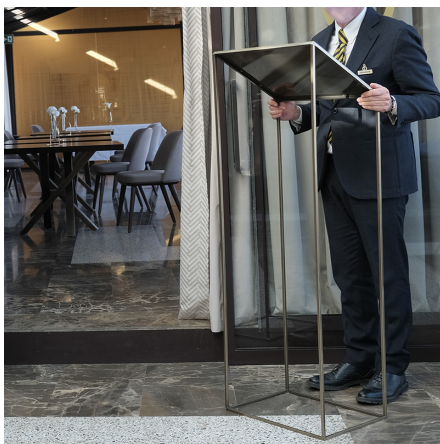
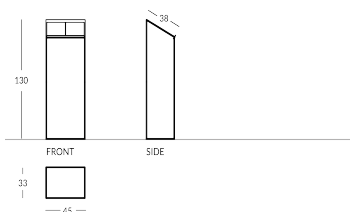


## FRIEDA-MEN

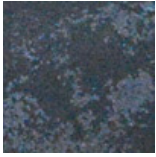
Soporte de menú de diseño de metal de la Colección Frieda: perímetro rectangular con estructura mínima. Barras de metal con perfil cuadrado. Balda metálica inclinada. Acabados disponibles: - metálica: efecto latón, acero o cobre - pintura en los colores Apir o en cualquier tono de la escala RAL Patas protectoras en la parte inferior. Altura: 130 cm Base rectangular: 45 x 33 cm Anchura atril: 38 cm



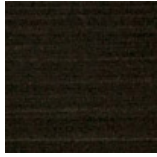
### Versione



## Finiture Metalliche | Metal finishes | Finitions métalliques



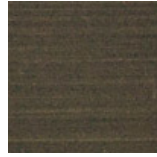
Acero industrial



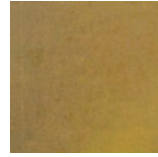
Latón Envejecido Oscuro



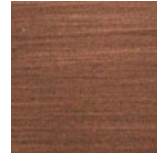
Latón bronce claro



Latón bronce oscuro

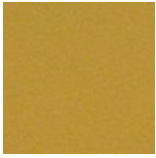


Latón industrial

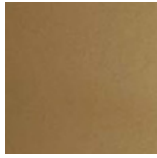


Cobre satinado efecto antiguo opaco

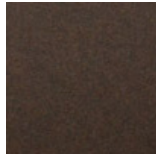
## Finiture Verniciate | Painted finishes | Finitions peintes



Oro



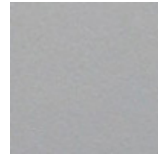
Oro antiguo



Bronze



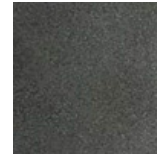
Simil Corten



Silver



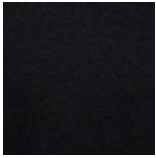
Tortora (Ral 1019)



Canna di Fucile



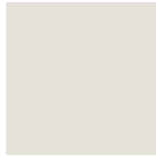
Antiguo De Luz



Matt black (Ral 9005)



Polished black (Ral 9005)



Matt white (Ral 9010)



Gris oscuro (Ral 7016)



Gris claro (Ral 7042)



Ral