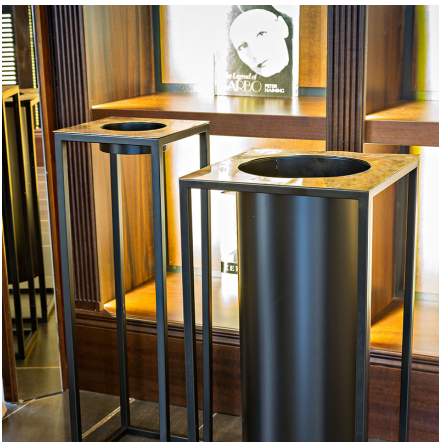
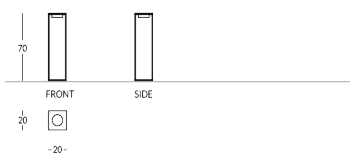


FRIEDA-CEN

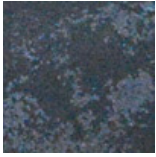
Cenicero de metal de la Colección Frieda. Estructura de perímetro cuadrado con cuatro barras de metal y estante cenicero superior. Acabados disponibles: - metálica: efecto latón, acero o cobre - pintura en los colores Apir o en cualquier tono de la escala RAL Patas protectoras en la parte inferior. Un saco de arena incluido. Altura: 70 cm Lado base cuadrada: 20 cm Peso: 2,80 kg



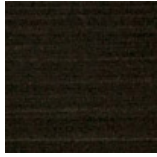
Versione



Finiture Metalliche | Metal finishes | Finitions métalliques



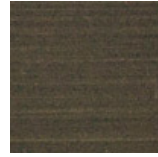
Acero industrial



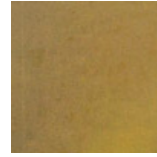
Latón Envejecido Oscuro



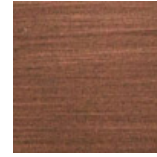
Latón bronce claro



Latón bronce oscuro

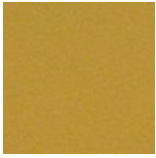


Latón industrial

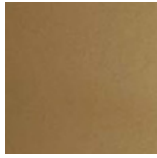


Cobre satinado efecto antiguo opaco

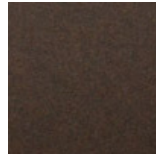
Finiture Verniciate | Painted finishes | Finitions peintes



Oro



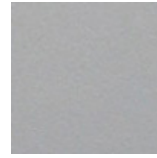
Oro antiguo



Bronze



Simil Corten



Silver



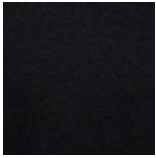
Tortora (Ral 1019)



Canna di Fucile



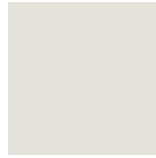
Antiguo De Luz



Matt black (Ral 9005)



Polished black (Ral 9005)



Matt white (Ral 9010)



Gris oscuro (Ral 7016)



Gris claro (Ral 7042)



Ral