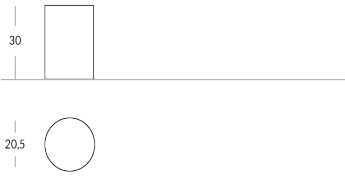


## BINS

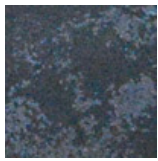
Papelera de acero inoxidable personalizable. Acabados disponibles: metálico (por ejemplo, latón satinado o acero cromado) o pintado en los colores Apir o en cualquier color de la escala RAL. Altura: 25 cm Diámetro base: 20,5 cm



# Versione



## Finiture Metalliche | Metal finishes | Finitions métalliques



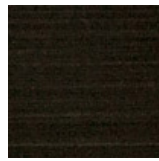
Acero industrial



Acero brillante



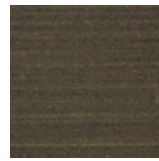
Acero satinado



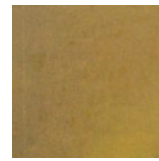
Latón Envejecido Oscuro



Latón bronce claro



Latón bronce oscuro



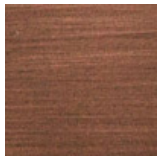
Latón industrial



Latón brillante.



Latón satinado.



Cobre satinado efecto antiguo opaco

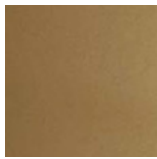


Cobre satinado brillante

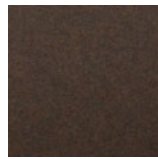
## Finiture Verniciate | Painted finishes | Finitions peintes



Oro



Oro antiguo



Bronze



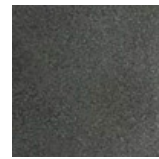
Simil Corten



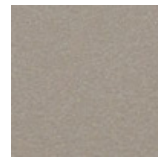
Silver



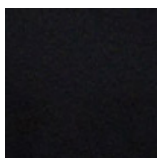
Tortora (Ral 1019)



Canna di Fucile



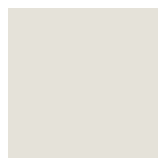
Antigo De Luz



Matt black (Ral 9005)



Polished black (Ral 9005)



Matt white (Ral 9010)



Gris oscuro (Ral 7016)



Gris claro (Ral 7042)



Ral