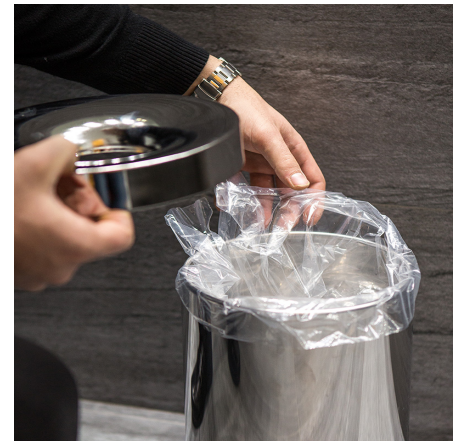


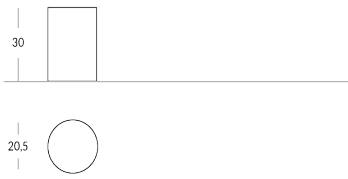
apir

## BINS-TAP

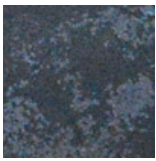
Papelera de acero inoxidable con tapa personalizable. Acabados disponibles: metálico (por ejemplo, latón satinado o acero cromado) o pintado en los colores Apir o en cualquier color de la escala RAL. Altura: 25 cm Diámetro base: 20,5 cm



# Versione



## Finiture Metalliche | Metal finishes | Finitions métalliques



Acero industrial



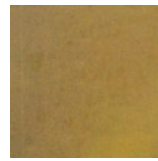
Acero brillante



Latón Envejecido Oscuro



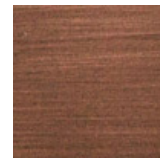
Latón bronce oscuro



Latón industrial



Latón brillante.



Cobre satinado efecto antiguo opaco

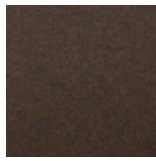
## Finiture Verniciate | Painted finishes | Finitions peintes



Oro



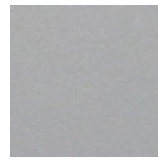
Oro antiguo



Bronze



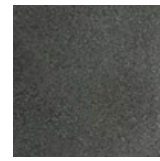
Simil Corten



Silver



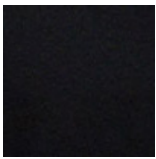
Tortora (Ral 1019)



Canna di Fucile



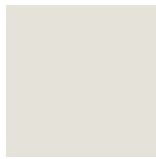
Antigo De Luz



Matt black (Ral 9005)



Polished black (Ral 9005)



Matt white (Ral 9010)



Gris oscuro (Ral 7016)



Gris claro (Ral 7042)



Ral