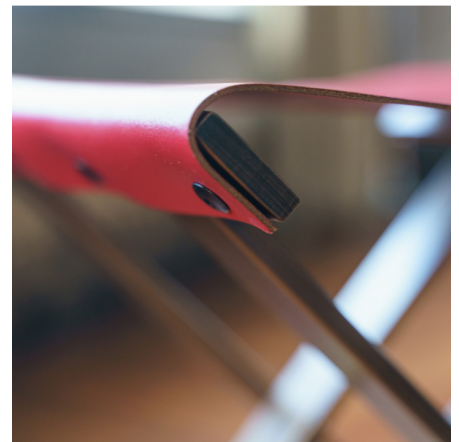
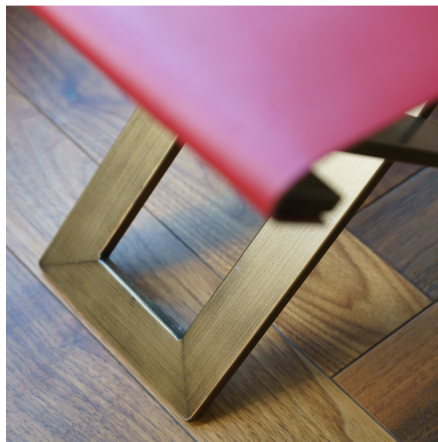
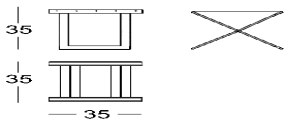


## KELLY

Reposa bolsos plegable personalizable. Material de la estructura: metal con perfil plano. Material de la correa: tejido High-Tech o cuero real, disponibles en diferentes colores. Acabado de la estructura: metálico (acero, cobre o latón) o pintado en los colores Apir o en cualquier color de la escala RAL. Estructura plegable para minimizar el volumen. Lado cubo: 35 cm Peso: 2,6 kg



### Versione



## Finiture Metalliche | Metal finishes | Finitions métalliques



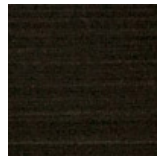
Acero industrial



Acero brillante



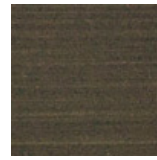
Acero satinado



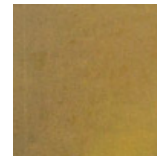
Latón Envejecido Oscuro



Latón bronce claro



Latón bronce oscuro



Latón industrial



Latón brillante.



Latón satinado.

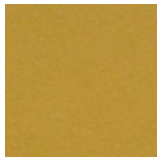


Cobre satinado efecto antiguo opaco

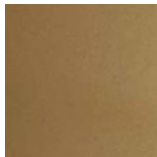


Cobre satinado brillante

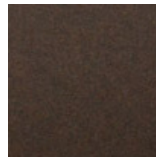
## Finiture Verniciate | Painted finishes | Finitions peintes



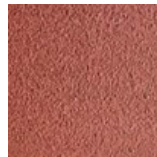
Oro



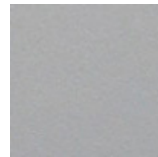
Oro antiguo



Bronze



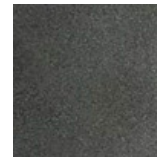
Simil Corten



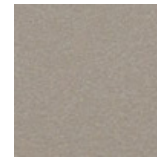
Silver



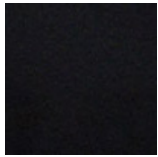
Tortora (Ral 1019)



Canna di Fucile



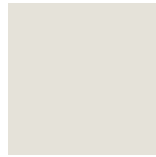
Antiguo De Luz



Matt black (Ral 9005)



Polished black (Ral 9005)



Matt white (Ral 9010)



Gris oscuro (Ral 7016)



Gris claro (Ral 7042)

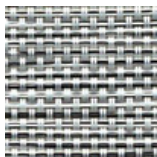


Ral

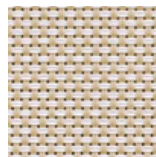
## Colore cinghie | Strap colour | Couleur de courroies



Hi-Tech Grey



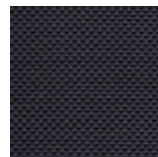
Hi-Tech Salt



Hi-Tech Sand



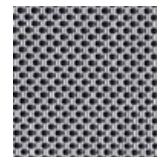
Hi-Tech Safari



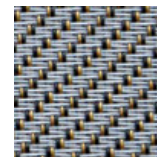
Hi-Tech Deep Black



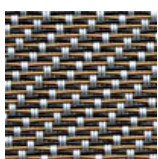
Hi-Tech White Snow



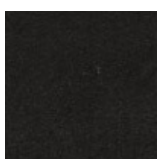
Hi-Tech Ipnotic Grey



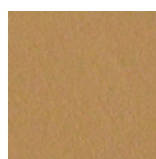
Hi-Tech Ethnic Silver



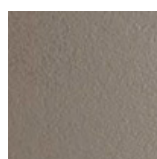
Hi-Tech Ethnic Bronze



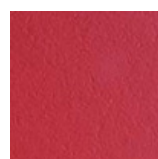
Cuero negro



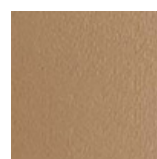
Cuero



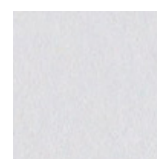
Cuero Barro



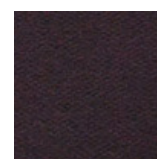
Cuero Rojo



Cuero Topo



Cuero blanco



Cuero marrón oscuro

