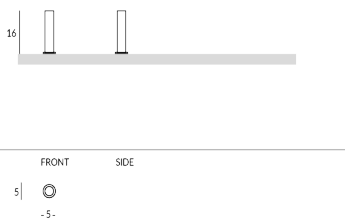


FLEUR

Florero de latón. Acabados disponibles: metálico (latón satinado o bronceado claro) o pintado en los colores Apir o en cualquier color de la escala RAL. Diámetro base: 5 cm Altura: 16 cm



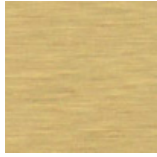
Versione



Finiture metalliche | Metal finishes | Finitions métalliques

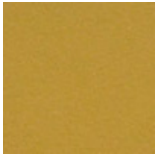


Latón bronce
claro

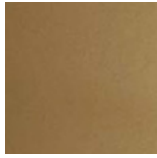


Latón
satinado.

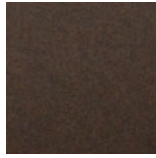
Finiture verniciate | Painted finishes | Finitions peintes



Oro



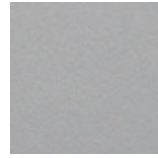
Oro antiguo



Bronze



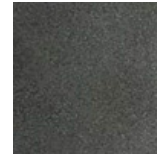
Simil Corten



Silver



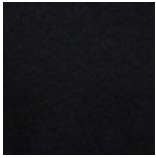
Tortora (Ral
1019)



Canna di
Fucile



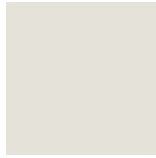
Antigo De
Luz



Matt black
(Ral 9005)



Polished
black (Ral
9005)



Matt white
(Ral 9010)



Gris oscuro
(Ral 7016)



Gris claro
(Ral 7042)



Ral