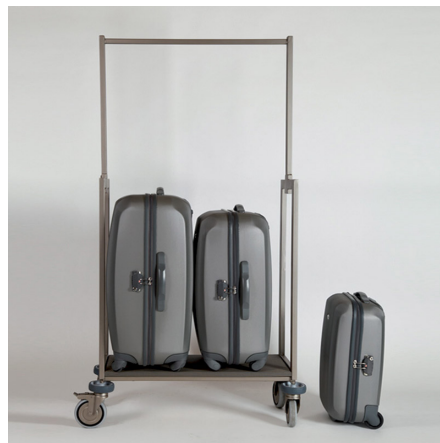
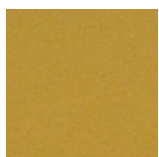


# DUCCIO

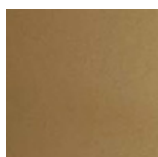
Carro portaequipajes de dimensiones reducidas, adecuado también para hoteles con ascensores pequeños y espacios de maniobra reducidos. Estructura rectangular de metal personalizable con pintura en los colores APIR o en cualquier tono de la escala RAL. Estante de apoyo en aglomerado de madera revestido en tejido High-Tech, disponible en diferentes variantes de color. En la base, cuatro ruedas pivotantes equipadas con disco protector de goma rígida; freno presente en dos ruedas. Altura: 175 cm Ancho: 51 cm Profundidad: 81 cm Peso: 21 kg



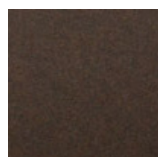
## Finiture Verniciate | Painted finishes | Finitions peintes



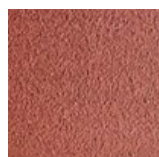
Oro



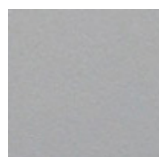
Oro antiguo



Bronze



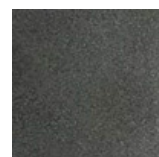
Simil Corten



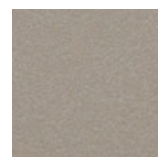
Silver



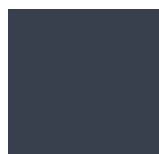
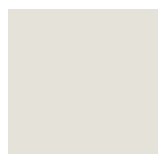
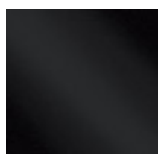
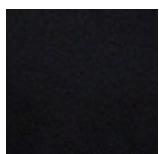
Tortora (Ral 1019)



Canna di Fucile



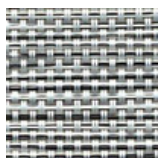
Antiguo De Luz



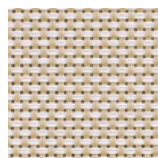
## Fantasia Tessuto | Textile patterns | Tissu imprimé



Hi-Tech Grey



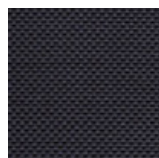
Hi-Tech Salt



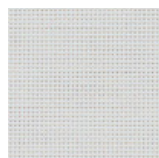
Hi-Tech Sand



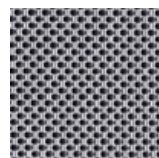
Hi-Tech  
Safari



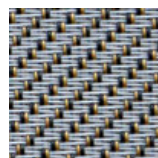
Hi-Tech Deep  
Black



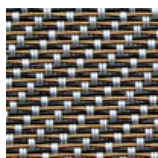
Hi-Tech White  
Snow



Hi-Tech  
Ipnotic Grey



Hi-Tech  
Ethnic Silver



Hi-Tech  
Ethnic Bronze