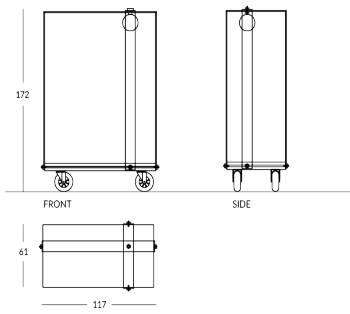


BONDY

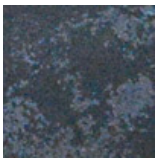
Carro portaequipajes de hierro con bastidor de placas de hierro y gancho para colgar ropa. Estante de roble rústico fijado a cuatro ruedas, dos fijas y dos pivotantes, y equipado con junta de goma protectora antigolpes. Acabados disponibles: - acero industrial - pintura en los colores APIR o en cualquier tono de la escala RAL Altura: 172 cm Ancho: 61 cm Profundidad: 117 cm Peso: 79 kg



Versione

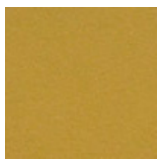


Finiture Metalliche | Metal finishes | Finitions métalliques

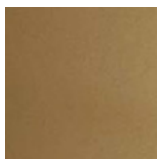


Acero industrial

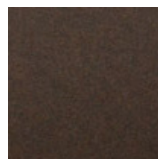
Finiture Verniciate | Painted finishes | Finitions peintes



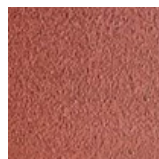
Oro



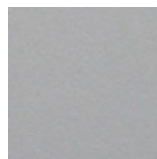
Oro antiguo



Bronze



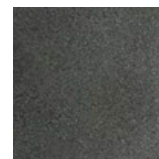
Simil Corten



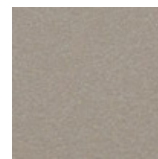
Silver



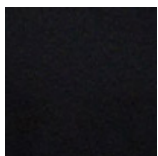
Tortora (Ral 1019)



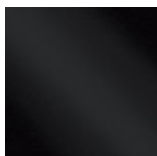
Canna di Fucile



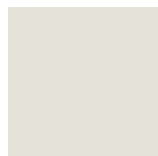
Antigo De Luz



Matt black (Ral 9005)



Polished black (Ral 9005)



Matt white (Ral 9010)



Gris oscuro (Ral 7016)



Gris claro (Ral 7042)



Ral