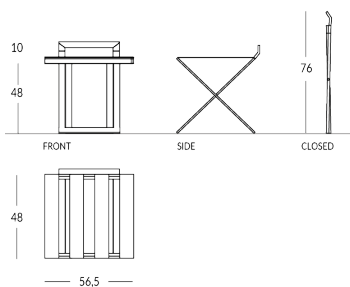


SUITTY/S

Reposamaleta plegable personalizable con respaldo. Material de la estructura: metal con perfil plano. Material de las correas: tejido High-Tech o cuero disponible en diferentes colores. Acabado de la estructura: metálico (acero o latón) o pintado en los colores Apir o en cualquier color de la escala RAL. Pies de goma opcionales. Estructura plegable para minimizar el volumen. Altura con barandilla: 58 cm Altura cerrado: 76 cm Anchura: 56,5 cm Profundidad abierto: 48 cm Peso: 4,85 kg



Versione



SUITTY/S-SML

Finiture metalliche | Metal finishes | Finitions métalliques



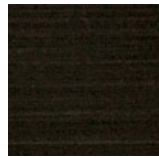
Acero industrial



Acero brillante



Acero satinado



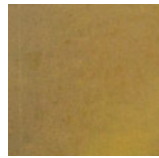
Latón Envejecido Oscuro



Latón bronce claro



Latón bronce oscuro



Latón industrial



Latón brillante.



Latón satinado.

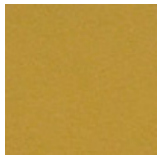


Cobre satinado efecto antiguo opaco

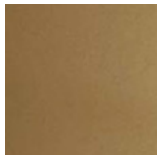


Cobre satinado brillante

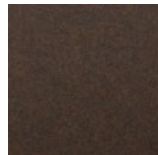
Finiture verniciate | Painted finishes | Finitions peintes



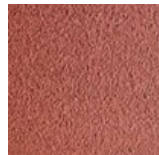
Oro



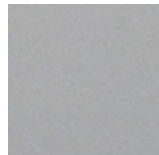
Oro antiguo



Bronze



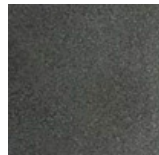
Simil Corten



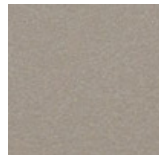
Silver



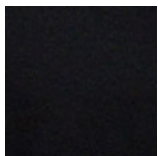
Tortora (Ral 1019)



Canna di Fucile



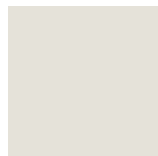
Antiguo De Luz



Matt black (Ral 9005)



Polished black (Ral 9005)



Matt white (Ral 9010)



Gris oscuro (Ral 7016)



Gris claro (Ral 7042)

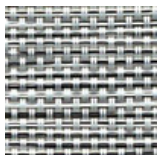


Ral

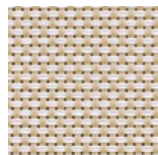
Colore cinghie cuoio | Strap colour | Couleur de courroies



Hi-Tech Grey



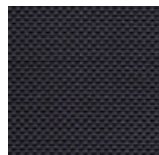
Hi-Tech Salt



Hi-Tech Sand



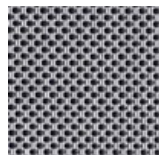
Hi-Tech Safari



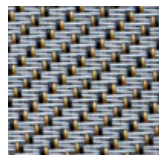
Hi-Tech Deep Black



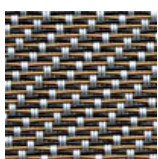
Hi-Tech White Snow



Hi-Tech Ipnotic Grey



Hi-Tech Ethnic Silver



Hi-Tech Ethnic Bronze