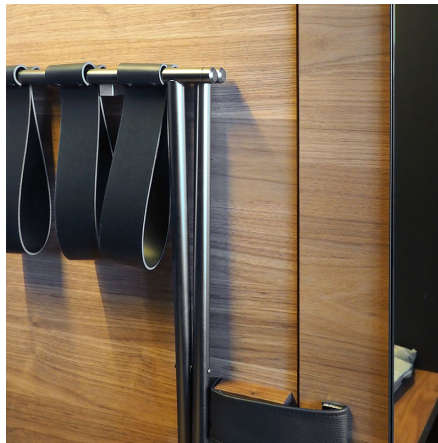
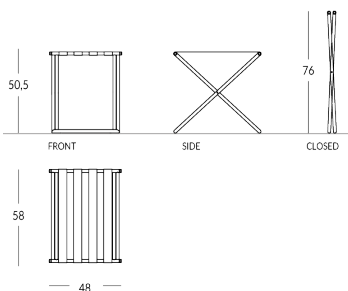


ISLA

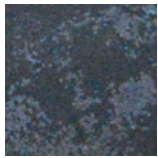
Portamaletas plegable con correas de cuero. Material de la estructura: metal con perfil redondo. Material de las correas: cuero real, disponible en diferentes colores. Acabado de la estructura: metálico (acero o latón) o pintado en los colores Apir o en cualquier color de la escala RAL. Estructura plegable para minimizar el volumen. Altura abierto: 50,5 cm Altura cerrado: 76 cm Anchura: 58 cm Profundidad: 48 cm Peso: 4 kg



Versione



Finiture Metalliche | Metal finishes | Finitions métalliques



Acero industrial



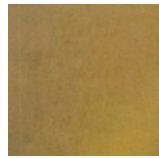
Acero brillante



Latón bronce claro



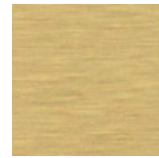
Latón bronce oscuro



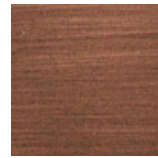
Latón industrial



Latón brillante.

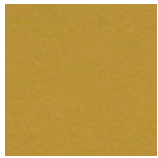


Latón satinado.

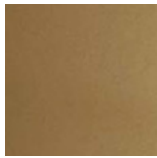


Cobre satinado efecto antiguo opaco

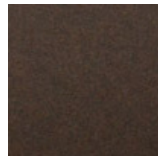
Finiture Verniciate | Painted finishes | Finitions peintes



Oro



Oro antiguo



Bronze



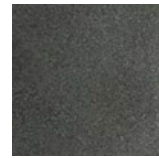
Simil Corten



Silver



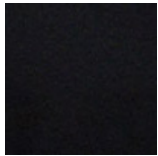
Tortora (Ral 1019)



Canna di Fucile



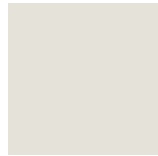
Antiguo De Luz



Matt black (Ral 9005)



Polished black (Ral 9005)



Matt white (Ral 9010)



Gris oscuro (Ral 7016)



Gris claro (Ral 7042)

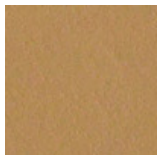


Ral

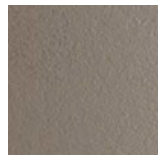
Colore Cinghie Cuio | Strap colour | Couleur de courroies



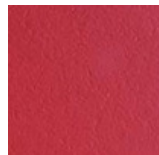
Cuero negro



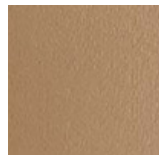
Cuero



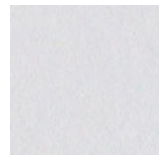
Cuero Barro



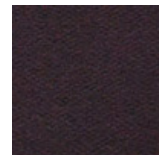
Cuero Rojo



Cuero Topo



Cuero blanco



Cuero marrón oscuro