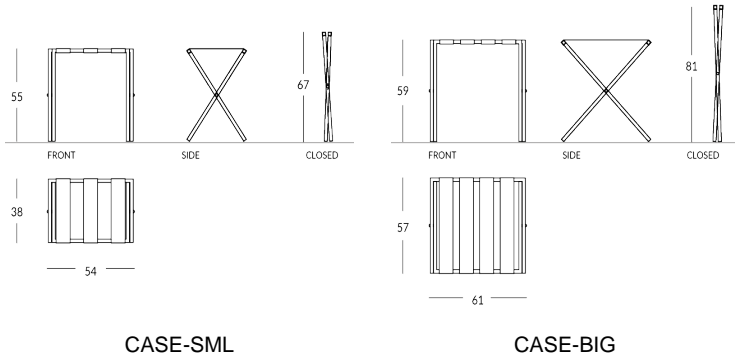


## CASE

Reposamaleta plegable personalizable. Material de la estructura: metal con perfil cuadrado y pies de goma. Material de las correas: tejido High-Tech o cuero real, disponibles en diferentes colores. Ancho de las correas: cuero 4 cm; High-Tech 89 mm. Acabado de la estructura: metálico (acero o latón) o pintado en los colores Apir o en cualquier color de la escala RAL. Estructura plegable para minimizar el volumen. Formato SML Altura abierto: 55 cm Altura cerrado: 67 cm Ancho: 54 cm Profundidad abierto: 38 cm Peso: 4,2 kg Formato BIG Altura abierta: 59 cm Altura cerrado: 81 cm Ancho: 61 cm Profundidad abierto: 57 cm Peso: 4,2 kg



## Versione



CASE-SML

CASE-BIG

## Finiture metalliche | Metal finishes | Finitions métalliques



Acero  
brillante

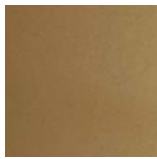


Latón  
brillante.

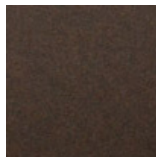
## Finiture verniciate | Painted finishes | Finitions peintes



Oro



Oro antiguo



Bronze



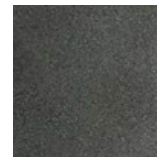
Simil Corten



Silver



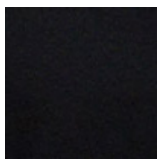
Tortora (Ral  
1019)



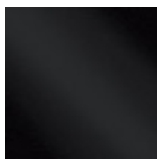
Canna di  
Fucile



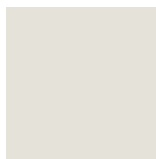
Antigo De  
Luz



Matt black  
(Ral 9005)



Polished  
black (Ral  
9005)



Matt white  
(Ral 9010)



Gris oscuro  
(Ral 7016)

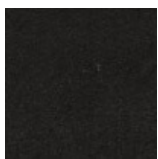


Gris claro  
(Ral 7042)

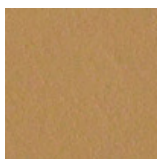


Ral

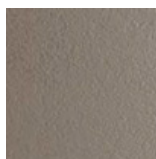
## Colore cinghie cuoio | Strap colour | Couleur de courroies



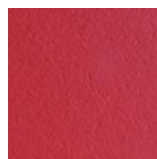
Cuero negro



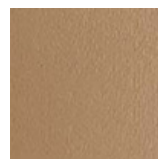
Cuero



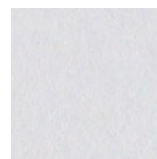
Cuero Barro



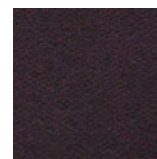
Cuero Rojo



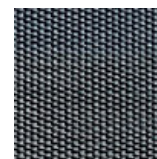
Cuero Topo



Cuero blanco



Cuero marrón  
oscuro



Hi-Tech Grey

