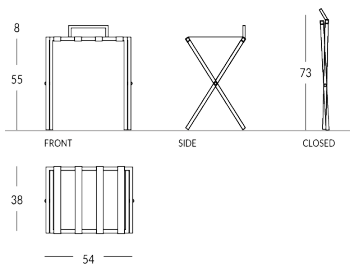


## CASE/S

Reposamaleta plegable personalizable con respaldo. Material de la estructura: metal con perfil cuadrado y pies de goma. Material de las correas: tejido High-Tech o cuero real, disponibles en diferentes colores. Acabado de la estructura: metálico (acero o latón) o pintado en los colores Apir o en cualquier color de la escala RAL. Estructura plegable para minimizar el volumen. Altura abierto: 55 cm Altura cerrado: 73 cm Ancho: 54 cm Profundidad abierto: 38 cm Peso: 4,2 kg



### Versione



CASE/S-SML

## Finiture Metalliche | Metal finishes | Finitions métalliques



Acero  
brillante

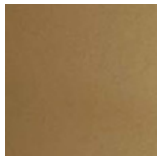


Latón  
brillante.

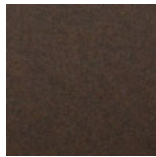
## Finiture Verniciate | Painted finishes | Finitions peintes



Oro



Oro antiguo



Bronze



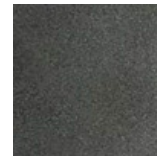
Simil Corten



Silver



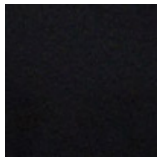
Tortora (Ral  
1019)



Canna di  
Fucile



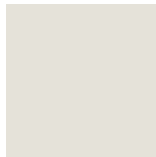
Antiguo De  
Luz



Matt black  
(Ral 9005)



Polished  
black (Ral  
9005)



Matt white  
(Ral 9010)



Gris oscuro  
(Ral 7016)



Gris claro  
(Ral 7042)

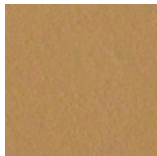


Ral

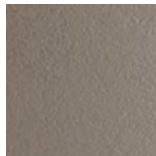
## Colore Cinghie | Strap colour | Couleur de courroies



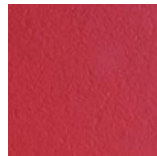
Cuero negro



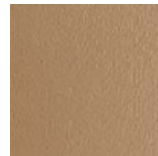
Cuero



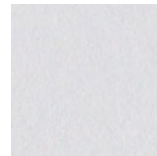
Cuero Barro



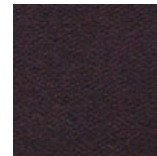
Cuero Rojo



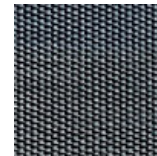
Cuero Topo



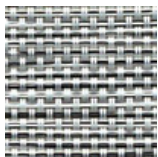
Cuero blanco



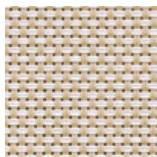
Cuero marrón  
oscuro



Hi-Tech Grey



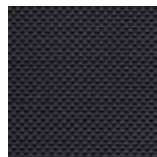
Hi-Tech Salt



Hi-Tech Sand



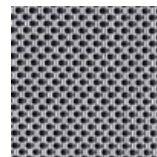
Hi-Tech  
Safari



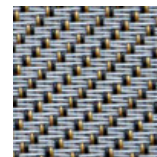
Hi-Tech Deep  
Black



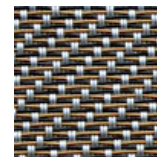
Hi-Tech White  
Snow



Hi-Tech  
Ipnotic Grey



Hi-Tech  
Ethnic Silver



Hi-Tech  
Ethnic Bronze