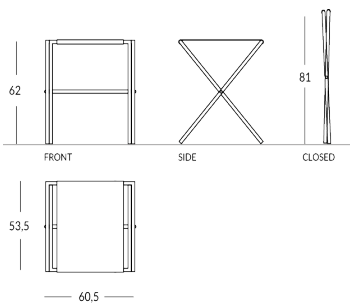


## LUG-LUX

Reposamaleta plegable de metal con correa única. Material de la estructura: metal con perfil redondo. Material correa única: cuero auténtico disponible en varios colores. Acabado de la estructura: metálico (acero o latón) o pintado en los colores Apir o en cualquier color de la escala RAL. Pies de goma. Estructura plegable para minimizar el volumen. Altura abierto: 62 cm Altura cerrado: 81 cm Anchura: 60,5 cm Profundidad abierto: 53,5 cm Peso: 3,3 kg



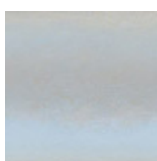
### Versione



### Finiture Metalliche | Metal finishes | Finitions métalliques



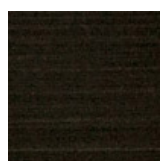
Acero industrial



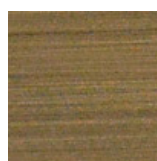
Acero brillante



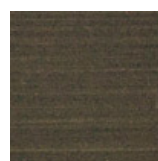
Acero satinado



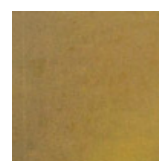
Latón Envejecido Oscuro



Latón bronce claro



Latón bronce oscuro



Latón industrial



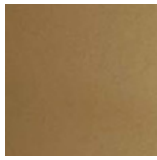
Latón brillante.



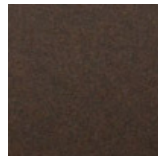
## Finiture Verniciate | Painted finishes | Finitions peintes



Oro



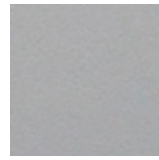
Oro antiguo



Bronze



Simil Corten



Silver



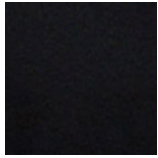
Tortora (Ral  
1019)



Canna di  
Fucile



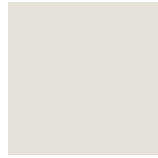
Antigo De  
Luz



Matt black  
(Ral 9005)



Polished  
black (Ral  
9005)



Matt white  
(Ral 9010)



Gris oscuro  
(Ral 7016)



Gris claro  
(Ral 7042)

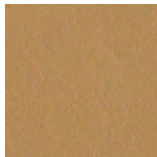


Ral

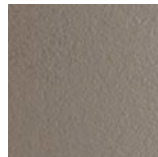
## Colore Cinghie | Strap colour | Couleur de courroies



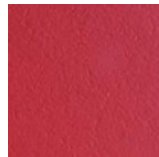
Cuero negro



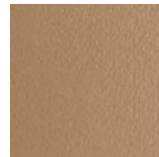
Cuero



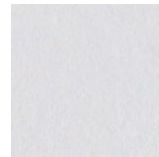
Cuero Barro



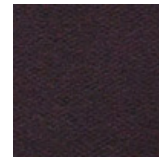
Cuero Rojo



Cuero Topo



Cuero blanco



Cuero marrón  
oscuro