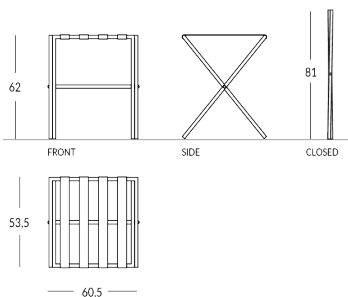


## LUG

Reposamaleta plegable de metal. Material de la estructura: metal con perfil redondo. Material de las correas: tejido High-Tech disponible en diferentes colores. Acabado de la estructura: metálico (acero o latón) o pintado en los colores Apir o en cualquier color de la escala RAL. Pies de goma. Estructura plegable para minimizar el volumen. Altura abierto: 62 cm Altura cerrado: 81 cm Anchura: 60,5 cm Profundidad abierto: 53,5 cm Peso: 3,3 kg



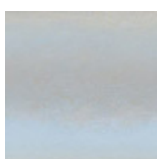
### Versione



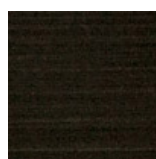
### Finiture Metalliche | Metal finishes | Finitions métalliques



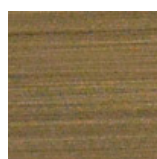
Acero industrial



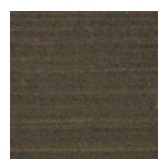
Acero brillante



Latón Envejecido Oscuro



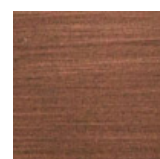
Latón bronce claro



Latón bronce oscuro



Latón brillante.

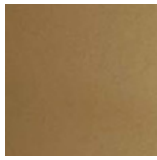


Cobre satinado efecto antiguo opaco

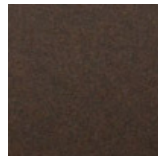
## Finiture Verniciate | Painted finishes | Finitions peintes



Oro



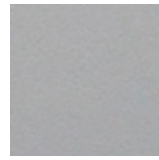
Oro antiguo



Bronze



Simil Corten



Silver



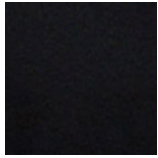
Tortora (Ral 1019)



Canna di Fucile



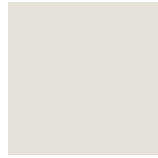
Antigo De Luz



Matt black (Ral 9005)



Polished black (Ral 9005)



Matt white (Ral 9010)



Gris oscuro (Ral 7016)



Gris claro (Ral 7042)

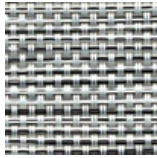


Ral

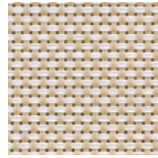
## Colore Cinghie | Strap colour | Couleur de courroies



Hi-Tech Grey



Hi-Tech Salt



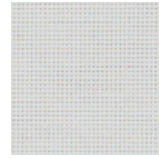
Hi-Tech Sand



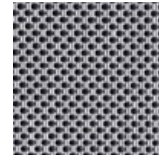
Hi-Tech Safari



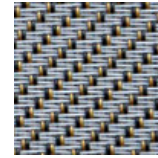
Hi-Tech Deep Black



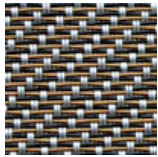
Hi-Tech White Snow



Hi-Tech Ipnotic Grey



Hi-Tech Ethnic Silver



Hi-Tech Ethnic Bronze