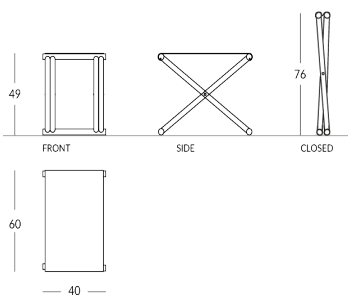


## TOMO

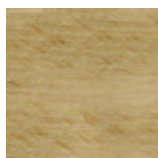
Reposamaleta plegable de madera. Material de la estructura: madera clara o madera de wengué oscuro. Material de las correas: cuero real o tejido High-Tech, disponibles en diferentes colores. Estructura plegable para minimizar el volumen. Altura abierto: 49 cm Altura cerrado: 76 cm Anchura: 60 cm Profundidad abierto: 40 cm Peso: 3,1 kg



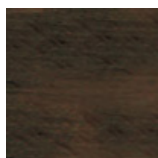
### Versione



## Finiture | Finishing materials | Matériaux

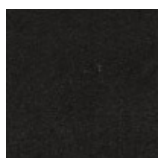


Madera Clara

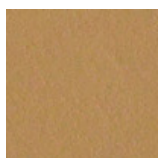


Madera  
Wengue

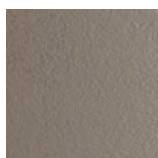
## Colore Cinghia | Strap colour | Couleur de la sangle



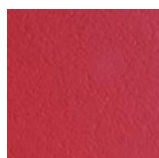
Cuero negro



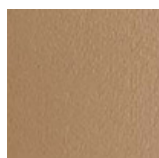
Cuero



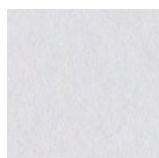
Cuero Barro



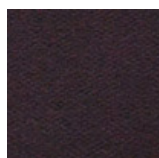
Cuero Rojo



Cuero Topo



Cuero blanco



Cuero marrón  
oscuro