

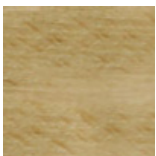


EDUARD

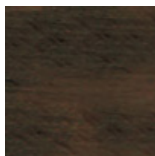
Portamaletas plegable de madera, con respaldo. Estructura: de madera con perfil rectangular. Disponible en versión madera clara o madera de wengué oscuro. Correas: de cuero, disponibles en diferentes colores. Estructura plegable para minimizar el volumen. Altura abierto: 54 cm Altura cerrado: 71 cm Ancho: 57 cm Profundidad: 50 cm Peso: 2,7 kg



Finiture Legno | Metal finishes | Finitions métalliques

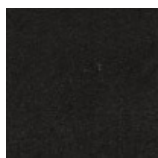


Madera Clara

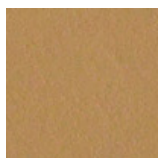


Madera Wengue

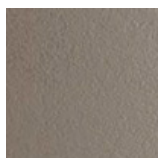
Colore Cinghie | Strap colour | Couleur de courroies



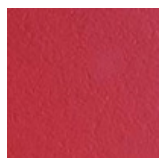
Cuero negro



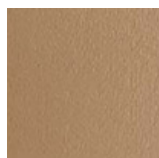
Cuero



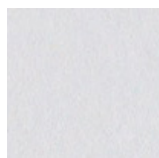
Cuero Barro



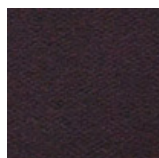
Cuero Rojo



Cuero Topo



Cuero blanco



Cuero marrón
oscuro