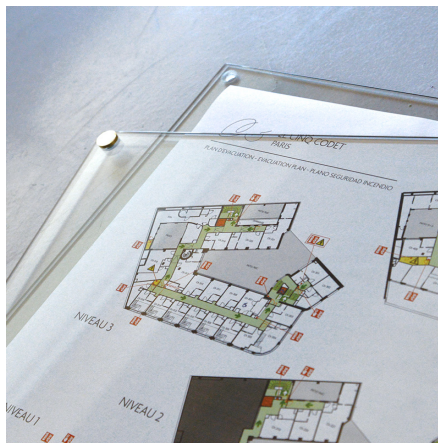
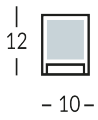


VERRE-NORME

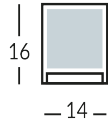
Línea de señalización de seguridad y contra incendios de vidrio con detalles de aluminio anodizado. Textos y planos personalizables e impresos en cuatricromía. Materiales: vidrio con acabados de aluminio anodizado. Diferentes formatos disponibles y dimensiones personalizables en función de las necesidades. Acabado de los detalles de aluminio anodizado: latón metálico o acero satinado. Dimensiones estándar modificables y adaptables a las necesidades.



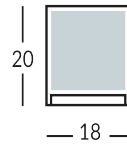
Versione



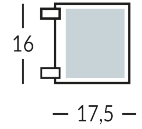
SML plate with vinyl



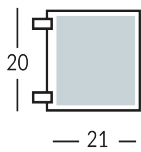
MED plate with vinyl



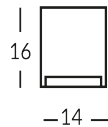
BIG plate with vinyl



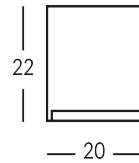
SML flag plate with vinyl



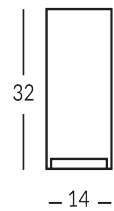
MED flag plate with vinyl



SML plate with print



MED plate with print



BIG plate with print

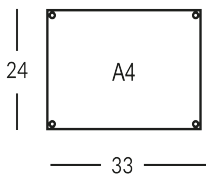


Plate with A4 printed plan

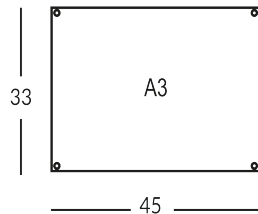
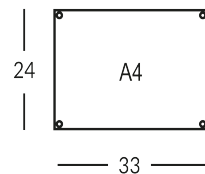
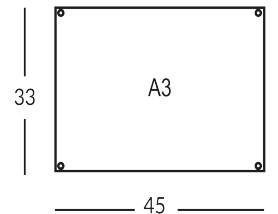


Plate with A3 printed plan



double glass for A4 paper



double glass for A3 paper

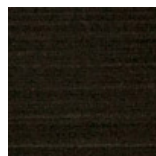
Finiture metalliche | Metal finishes | Finitions métalliques



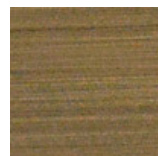
Acero brillante



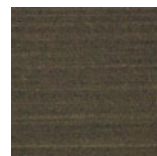
Acero satinado



Latón Envejecido Oscuro



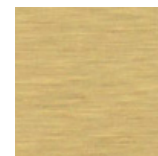
Latón bronce claro



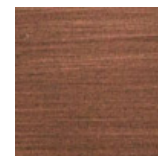
Latón bronce oscuro



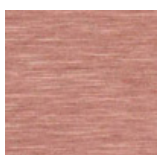
Latón brillante.



Latón satinado.



Cobre satinado efecto antiguo opaco



Symbols | Symboles



(ANT1) Extintor De Incendios



(ANT2) Extintor De Incendios



(ANT3) Extintor De Incendios



(ANT4) Hidrante



(ANT5) De Alarma De Incendio



(ANT6) Valvola Combustibile



(ANT7) Emergency button



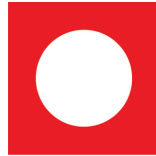
(ANT8)



(ANT9) Hydrant



(ANT10)



(ANT11)



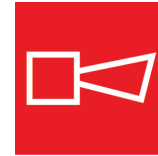
(ANT12)



(ANT13) Escalera Antincendio



(ANT14)



(ANT15)



(ANT16)



(ANT17) Lancia a Fuego



(ANT18)



(ANT19)



(ANT20)



(ANT21)



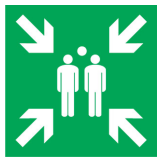
(EME1)



(EME2) Deposito de medicamentos



(EME3)



(EME4) El Punto De Recogida



(EME5) Dirección A Seguir



(EME6) Salida De Emergencia



(EME7) Salida De Emergencia



(EME8) Salida De Emergencia



(EME9) Salida De Emergencia



(EME10) Salida De Emergencia



(EME11) Salida De Emergencia



(EME12)



(EME13) Salida De Emergencia



(EME14) Salida De Emergencia



(EME15) Salida De Emergencia



(EME16) Salida De Emergencia



(EME17)



(PER1)



(PER2)



(PER3)



(PER4)



(PER5)



(PER6)



(PER7)



(DIV1)



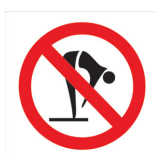
(DIV2)



(DIV3) No Smoking



(DIV4)



(DIV5)



(DIV6)



(DIV7)

