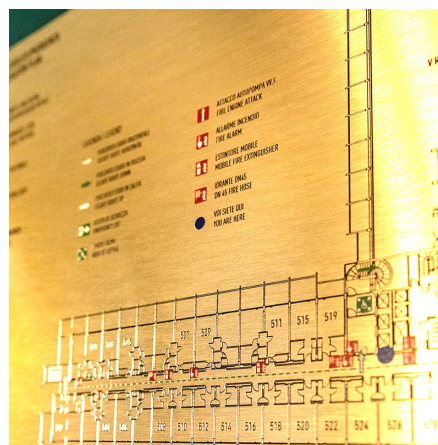
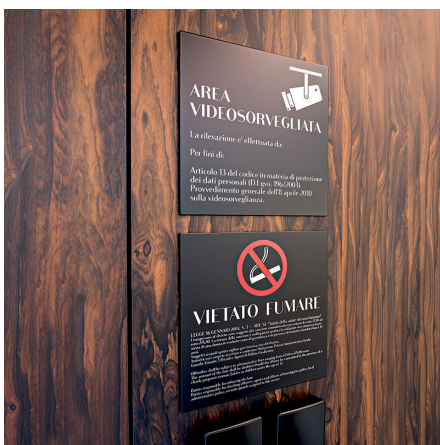
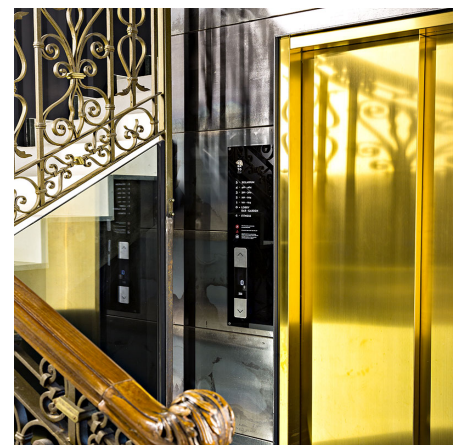
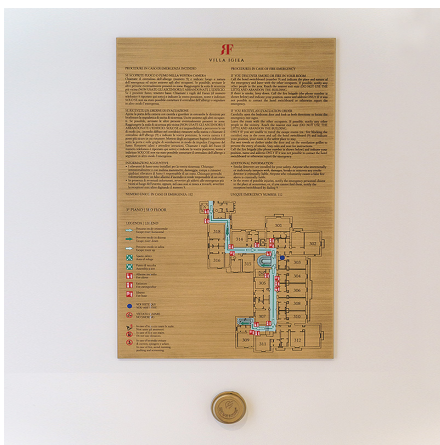


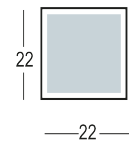
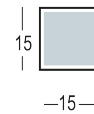
SURETE-NORME

Línea de señalización contra incendios y de seguridad. Acabados e impresión en cuatricromía personalizables. Materiales: estándar de aluminio anodizado; también disponible en latón, acero y plexiglás. Diferentes formatos disponibles y dimensiones personalizables en función de las necesidades. Acabado: en función del material, metálico o pintado en los colores de la paleta Apir o en cualquier color de la escala RAL. Al igual que el acabado, las dimensiones estándar también se pueden modificar y adaptar en función de las necesidades.





Versione

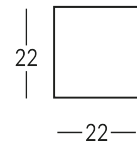
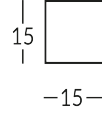
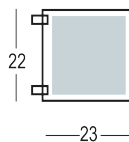
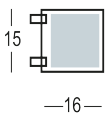


XS plate with vinyl

SML plate with vinyl

MED plate with vinyl

BIG plate with vinyl

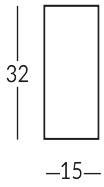


SML flag plate with vinyl

MED flag plate with vinyl

SML plate with print

MED plate with print



BIG plate with print

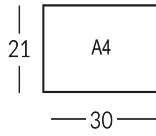


Plate with A4 printed plan

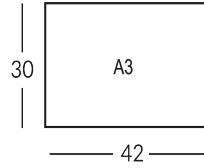
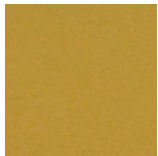
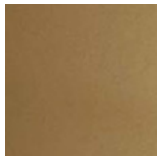


Plate with A3 printed plan

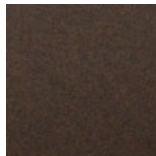
Finiture Verniciate | Painted finishes | Finitions peintes



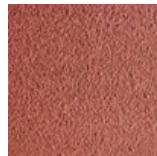
Oro



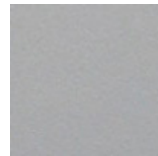
Oro antiguo



Bronze



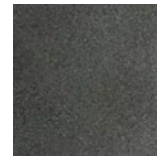
Simil Corten



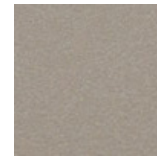
Silver



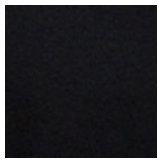
Tortora (Ral 1019)



Canna di Fucile



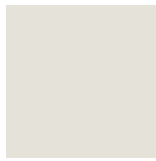
Antigo De Luz



Matt black (Ral 9005)



Polished black (Ral 9005)



Matt white (Ral 9010)



Gris oscuro (Ral 7016)



Gris claro (Ral 7042)



Ral

Symbols | Symboles



(ANT1) Extintor De Incendios



(ANT2) Extintor De Incendios



(ANT3) Extintor De Incendios



(ANT4) Hidrante



(ANT5) De Alarma De Incendio



(ANT6) Valvola Combustibile



(ANT7) Emergeny button



(ANT8)



(ANT9) Hydrant



(ANT10)



(ANT11)



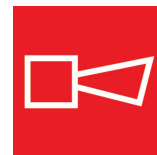
(ANT12)



(ANT13) Escala Antincendio



(ANT14)



(ANT15)



(ANT16)



(ANT17) Lancia a Fuego



(ANT18)



(ANT19)



(ANT20)



(ANT21)



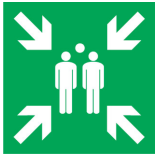
(EME1)



(EME2) Deposito de medicamento



(EME3)



(EME4)El Punto De Recogida



(EME5)Dirección A Seguir



(EME6)Salida De Emergencia



(EME7)Salida De Emergencia



(EME8)Salida De Emergencia



(EME9)Salida De Emergencia



(EME10)Salida De Emergencia



(EME11)Salida De Emergencia



(EME12)



(EME13)Salida De Emergencia



(EME14)Salida De Emergencia



(EME15)Salida De Emergencia



(EME16)Salida De Emergencia



(EME17)



(PER1)



(PER2)



(PER3)



(PER4)



(PER5)



(PER6)



(PER7)



(DIV1)



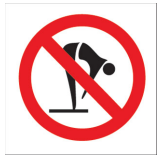
(DIV2)



(DIV3)No Smoking



(DIV4)



(DIV5)



(DIV6)



(DIV7)