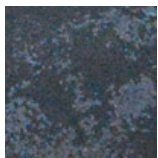


## EXTI

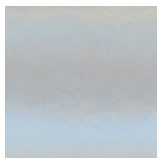
Soporte para extintores suspendido de metal. Lados abiertos para facilitar la extracción del extintor. Acabados disponibles: metálico o pintado en los colores Apir o en cualquier color de la escala RAL. Medidas estándar: 32 x 70 cm Fijación con pernos.



### Finiture Metalliche | Metal finishes | Finitions métalliques



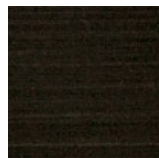
Acero industrial



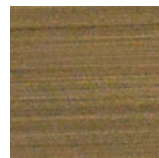
Acero brillante



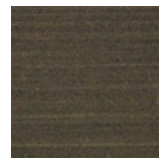
Acero satinado



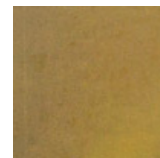
Latón Envejecido Oscuro



Latón bronce claro



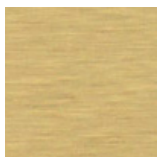
Latón bronce oscuro



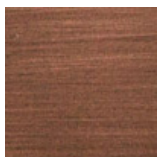
Latón industrial



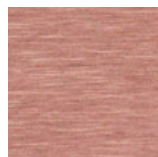
Latón brillante.



Latón satinado.

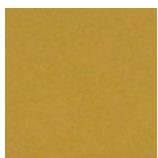


Cobre satinado efecto antiguo opaco

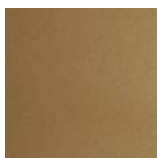


Cobre satinado brillante

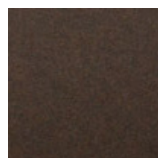
### Finiture Verniciate | Painted finishes | Finitions peintes



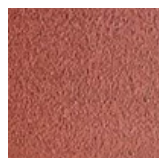
Oro



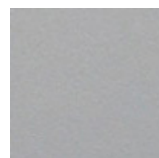
Oro antiguo



Bronze



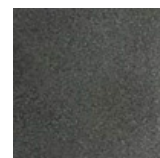
Simil Corten



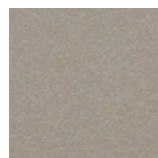
Silver



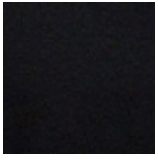
Tortora (Ral 1019)



Canna di Fucile



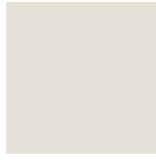
Antiguo De Luz



Matt black  
(Ral 9005)



Polished  
black (Ral  
9005)



Matt white  
(Ral 9010)



Gris oscuro  
(Ral 7016)



Gris claro  
(Ral 7042)



Ral