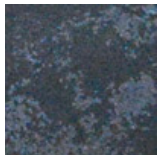


# IDRI

Puerta cubre hidrante de metal. Acabados disponibles: metálico o pintado en los colores Apir o en cualquier color de la escala RAL. Dimensiones personalizables. Fijación de seguridad con imán. Medidas estándar: 47x70 cm



## Finiture metalliche | Metal finishes | Finitions métalliques



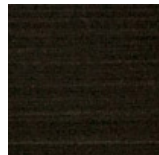
Acero industrial



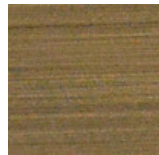
Acero brillante



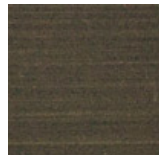
Acero satinado



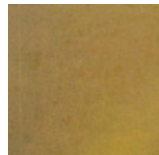
Latón Envejecido Oscuro



Latón bronce claro



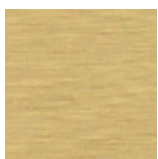
Latón bronce oscuro



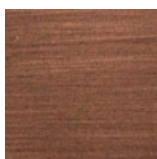
Latón industrial



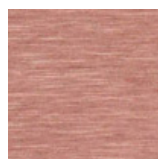
Latón brillante.



Latón satinado.

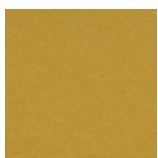


Cobre satinado efecto antiguo opaco

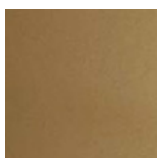


Cobre satinado brillante

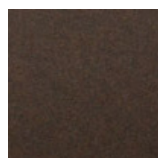
## Finiture verniciate | Painted finishes | Finitions peintes



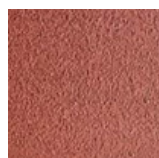
Oro



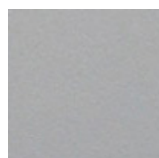
Oro antiguo



Bronze



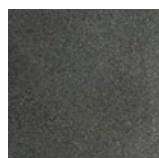
Simil Corten



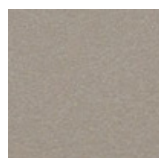
Silver



Tortora (Ral 1019)



Canna di Fucile



Antiguo De Luz

