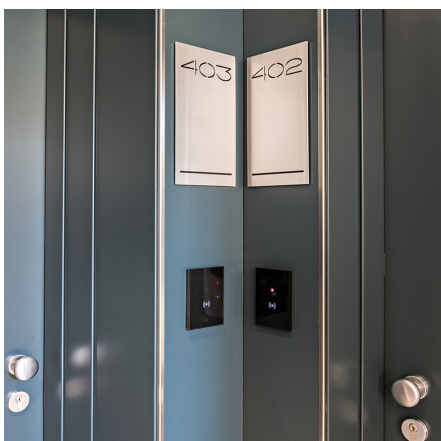
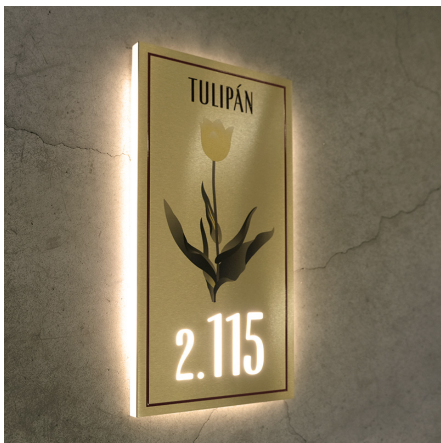
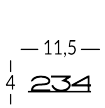


SAV

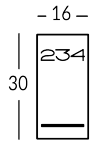
Línea de señalización para interiores realizada en acero, aluminio, latón o plexiglás. Composición placa: dos placas especulares de forma rectangular. Placa frontal perforada y realizada en acero, aluminio, latón o plexiglás. Placa posterior realizada en plexiglás pintado, visible a través del calado de la placa delantera. Textos y logotipos perforados en la placa frontal. Fijación a la pared mediante adhesivo de doble cara o tornillos según sea necesario. Posibilidad de añadir caracteres Braille para invidentes. Es posible añadir retroiluminación.



Versione



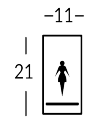
SAVNP



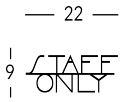
SAVP



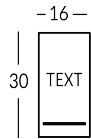
SAVI



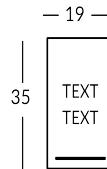
SAVX



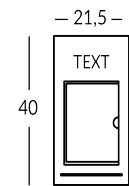
SAVLET



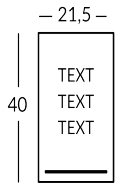
SAV1



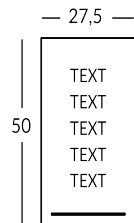
SAV2



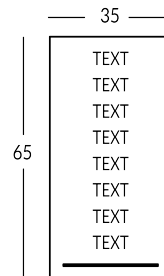
SAVT



SAV3



SAV5

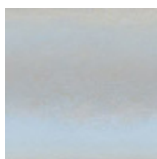


SAV8

Finiture Metalliche | Metal finishes | Finitions métalliques



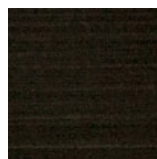
Acero industrial



Acero brillante



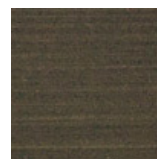
Acero satinado



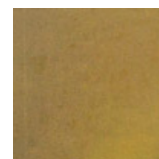
Latón Envejecido Oscuro



Latón bronce claro



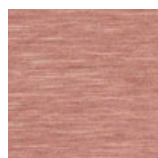
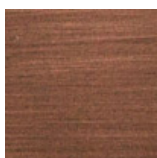
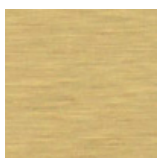
Latón bronce oscuro



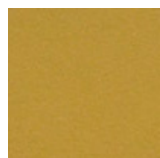
Latón industrial



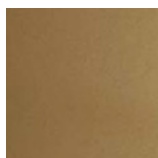
Latón brillante.



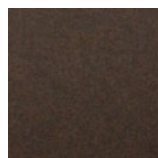
Finiture Verniciate | Painted finishes | Finitions peintes



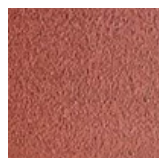
Oro



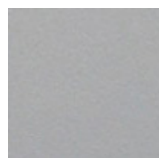
Oro antiguo



Bronze



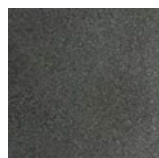
Simil Corten



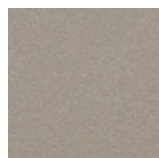
Silver



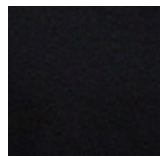
Tortora (Ral
1019)



Canna di
Fucile



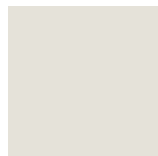
Antigo De
Luz



Matt black
(Ral 9005)



Polished
black (Ral
9005)



Matt white
(Ral 9010)



Gris oscuro
(Ral 7016)



Gris claro
(Ral 7042)



Ral